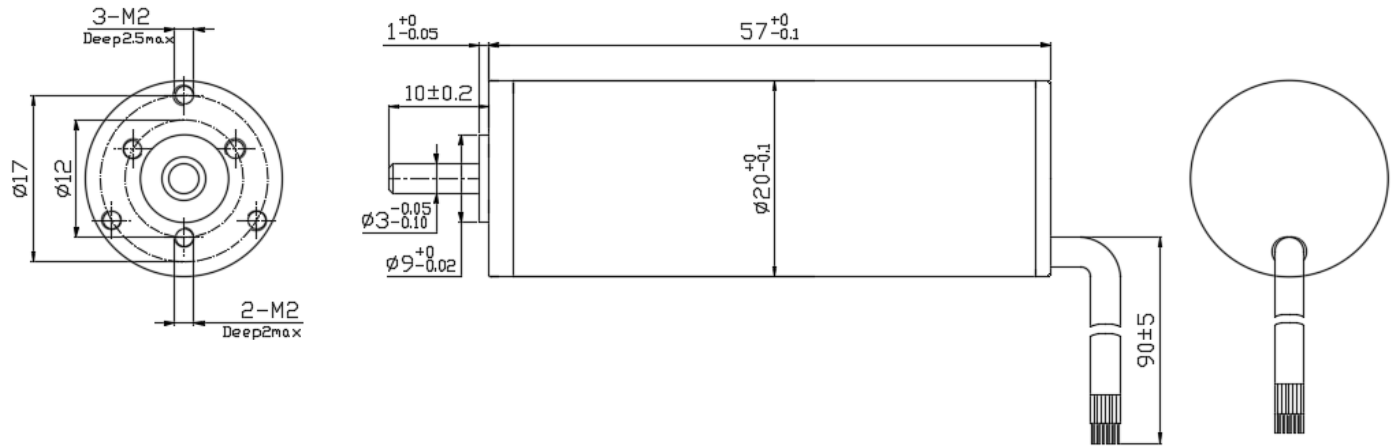


空心杯电枢绕组

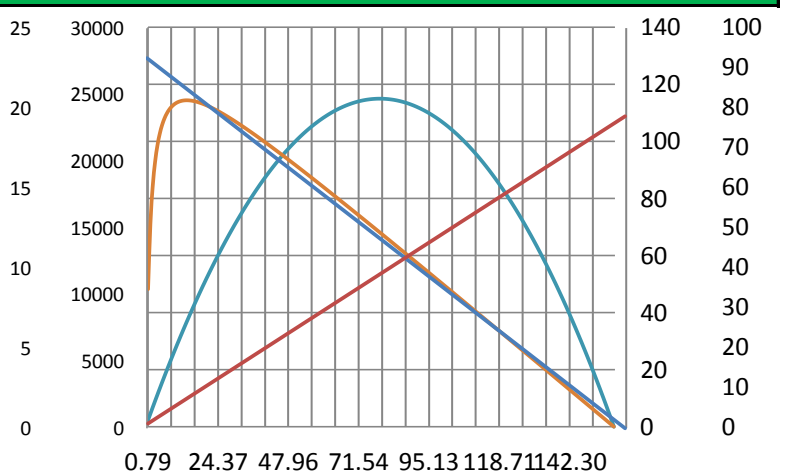
Φ20*L57mm无刷电机Brushless DC motor

SINBAD EC motor



电机参数 Motor Datas			电机型号 Motor Model			
额定电压参数值 Value at rated voltage			XBD2057H2			
			4260WG-0310			
额定点 Nominal	1 额定电压 Rat voltage	V/DC	24			
	2 额定转速 Nominal speed	rpm	24273			
	3 额定电流 Nominal current	A	2.7			
	4 额定转矩 Nominal torque	mNm	29.09			
空载点 Free Load	5 空载转速 No load speed	rpm	27900			
	6 空载电流 No load current	mA	180.0			
最大效率点 At Max. Efficiency	7 最大效率 Max. efficiency	%	81.7			
	8 转速 Speed	rpm	25389			
	9 电流 Current	A	1.9			
	10 转矩 Torque	mNm	14.151			
最大输出功率点 At Max. Output	11 最大功率 Max. output	W	114.8			
	12 转速 Speed	rpm	13950			
	13 电流 Current	A	9.8			
	14 转矩 Torque	mNm	78.62			
堵转点 At Stall	15 堵转电流 Stall current	A	19.5			
	16 堵转转矩 Stall torque	mNm	157.24			
电机常数 Motor Constants						
	17 电机阻抗 Terminal resistance	Ω	1.23			
	18 电机感抗 Terminal inductance	mH	0.14			
	19 转矩常数 Torque constant	mNm/A	0.008			
	20 转速常数 Speed constant	rpm/V	1162.5			
	21 转数/转矩常数 Speed/torque gradient	rpm/mNm	177.4			
	22 机械时间常数 Mechanical time constant	ms	2.5			
	23 转子惯量 Rotor inertia	gcm ²	5.3			
电机特性曲线 (Motor Characteristics)						
	24 极对数 Number of pole pairs	1				
	25 相数 Number of phasses	3				
	26 重量 Weight of motor g	58				
	27 噪音 Typical noise level dB	≤ 45				

电机端子定义 Motor terminal definition		
yellow	√ Hall sensor A	硅胶
blue	√ Hall sensor B	铁氟龙
white	√ Hall sensor C	硅胶
Red	√ V hall+5 VDC	硅胶
Black	√ GND	硅胶
Red	√ Motor winding A	铁氟龙
Black	√ Motor winding B	铁氟龙
white	√ Motor winding C	铁氟龙



防护等级 Protection grade

IP

54

A rpm

mN.m

W %

