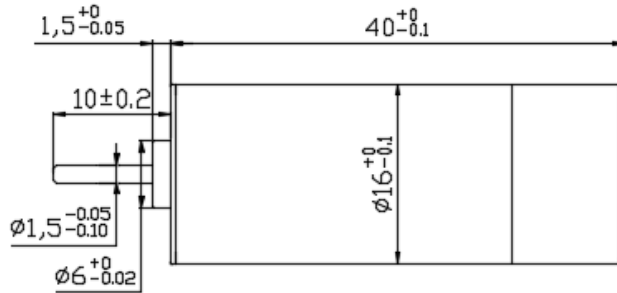
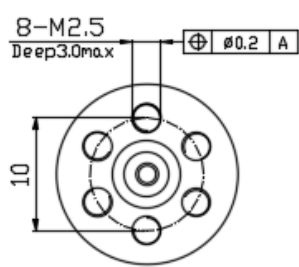


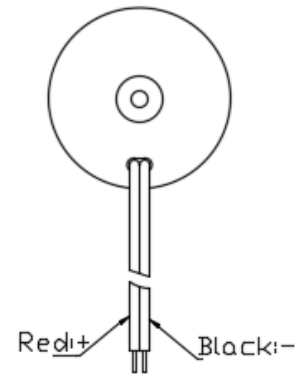
空心杯电枢绕组

Φ16*L40mm无刷电机Brushless DC motor

SINBAD EC motor



With Driver



电机参数 Motor Datas			电机型号 Motor Model				
额定电压参数值 Value at rated voltage			XBD1640Q1 2120WG- 1510				
额定点 Nominal	1 额定电压 Rat voltage	V/DC	12				
	2 额定转速 Nominal speed	rpm	10440				
	3 额定电流 Nominal current	A	0.3				
	4 额定转矩 Nominal torque	mNm	3.18				
空载点 Free Load	5 空载转速 No load speed	rpm	12000				
	6 空载电流 No load current	mA	25.0				
最大效率点 At Max. Efficiency	7 最大效率 Max. efficiency	%	78.1				
	8 转速 Speed	rpm	11100				
	9 电流 Current	A	0.2				
	10 转矩 Torque	mNm	1.289				
最大输出功率点 At Max.Output	11 最大功率 Max. output	W	5.4				
	12 转速 Speed	rpm	6000				
	13 电流 Current	A	0.9				
	14 转矩 Torque	mNm	8.60				
堵转点 At Stall	15 堵转电流 Stall current	A	1.9				
	16 堵转转矩 Stall torque	mNm	17.19				
电机常数 Motor Constants							
	17 电机阻抗 Terminal resistance	Ω	6.49				
	18 电机感抗 Terminal inductance	mH	0.23				
	19 转矩常数 Torque constant	mNm/A	0.009				
	20 转速常数 Speed constant	rpm/V	1000.0				
	21 转数/转矩常数 Speed/torque gradient	rpm/mNm	698.0				
	22 机械时间常数 Mechanical time constant	ms	0.0				
	23 转子惯量 Rotor inertia	gcm ²	0.3				
	电机特性曲线 (Motor Characteristics)						
	24 极对数 Number of pole pairs	1	2	14000		6	
	25 相数 Number of phasses	3					100
	26 重量 Weight of motor g	58					90
	27 噪音 Typical noise level dB	≤45					80

24 极对数 Number of pole pairs	1
25 相数 Number of phasses	3
26 重量 Weight of motor g	58
27 噪音 Typical noise level dB	≤45

电机端子定义 Motor terminal definition		
Red	√ DC+12V	Pin1
Black	√ GND	Pin2

